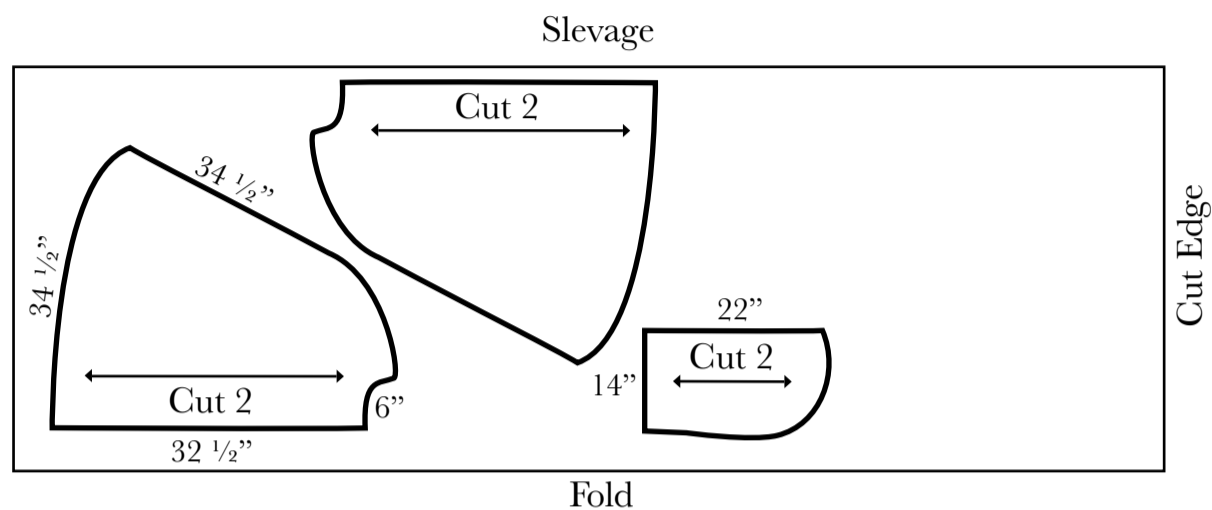


Tribal Cloak

by

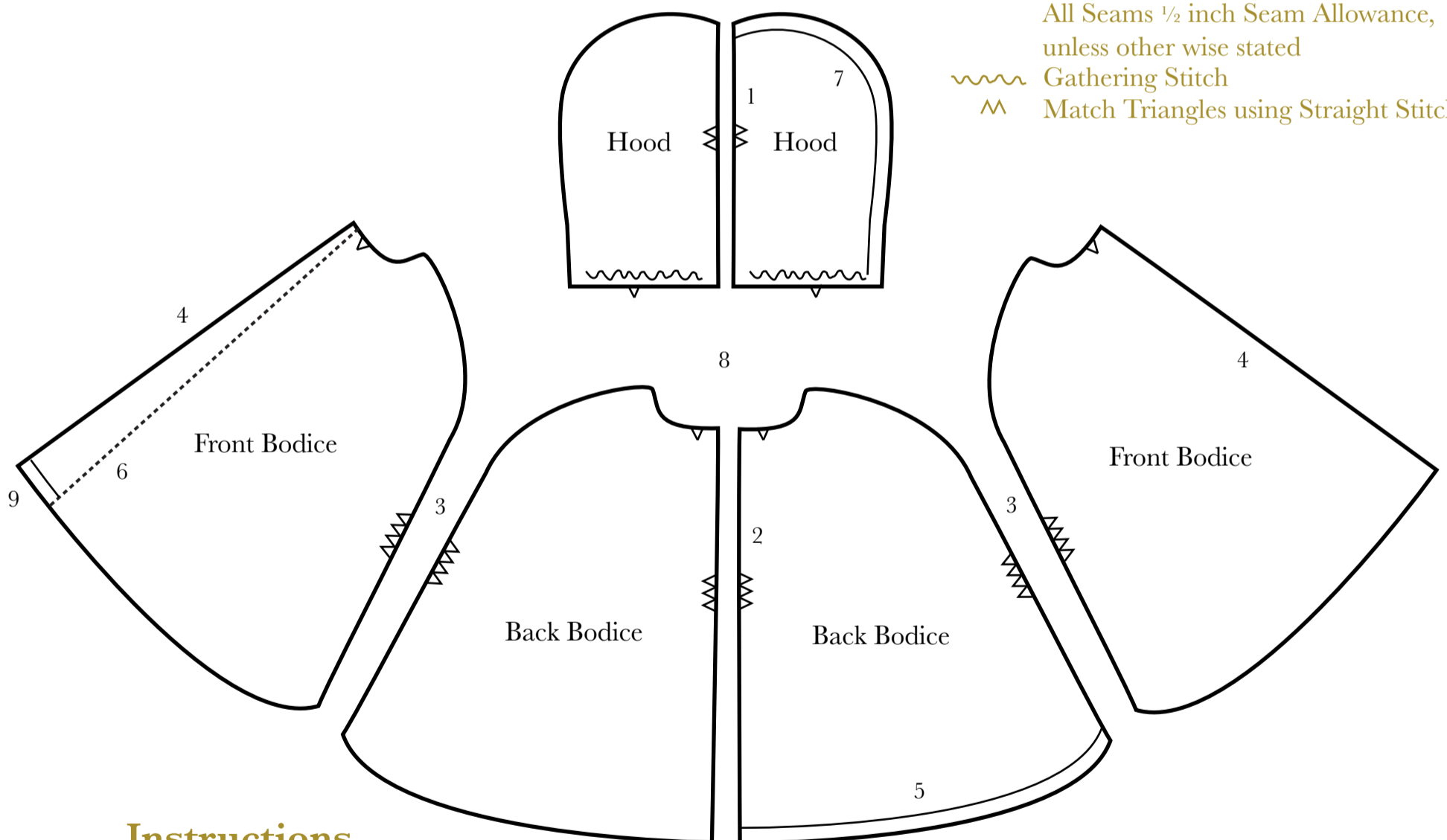
Tashina Lee Emery



All Seams 1/2 inch Seam Allowance, unless otherwise stated

~~~~~ Gathering Stitch

^^ Match Triangles using Straight Stitch



## Instructions

1. Attach Hood, right sides together
2. Attach Back Bodices together, right sides together
3. Attach both Front Bodice pieces, right sides facing
4. Hem (1/2") Front sides at to wrong sides
5. Hem *all* of bottom ( by folding up 1/2", 1/2")
6. Fold over edge at an angle, using the fold over at the top as a finished edge for the Hood
7. Hem the hood ( by folding up 1/2", 1/2")
8. Gather bottom of Hood, attach and fit Hood to neck of Cape Bodice
9. Fold the Flap to create a Pocket, top stitch down to the original Bottom hem



tashinaemery.com

Share your photos!  
#TLETribalCloak